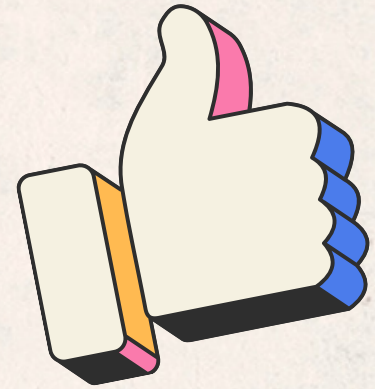
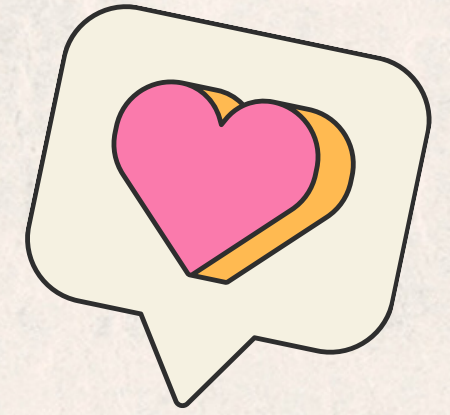




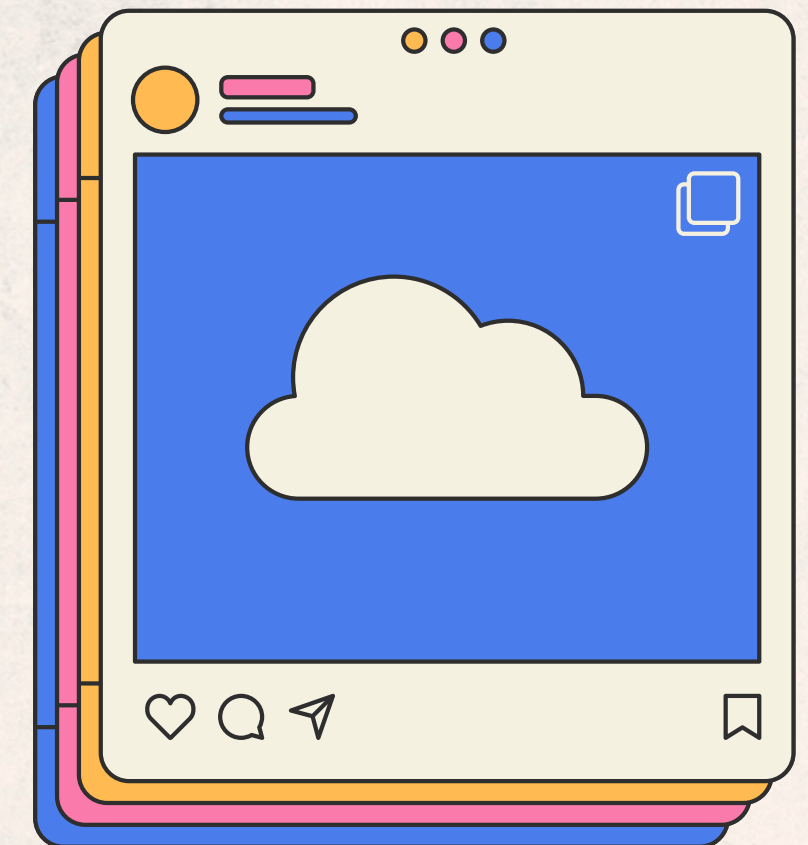
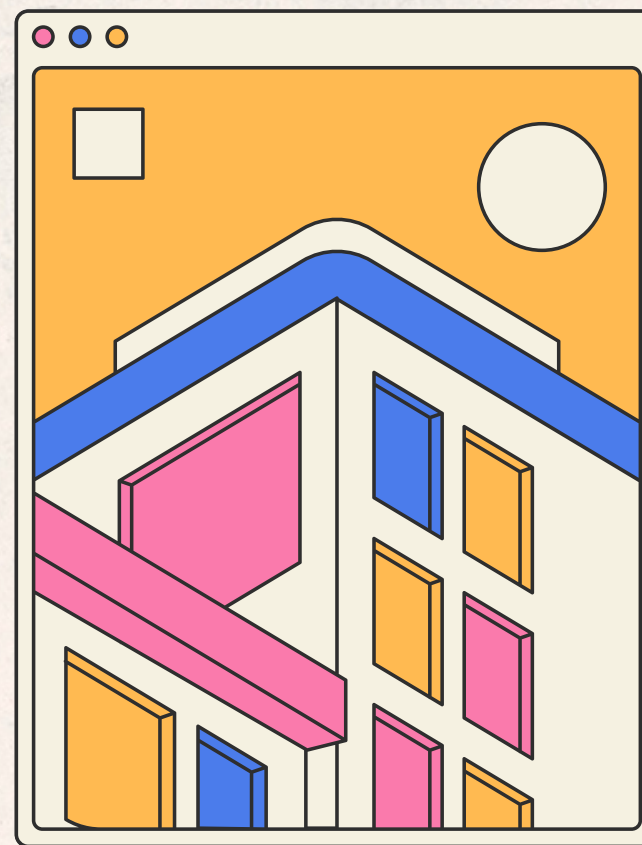
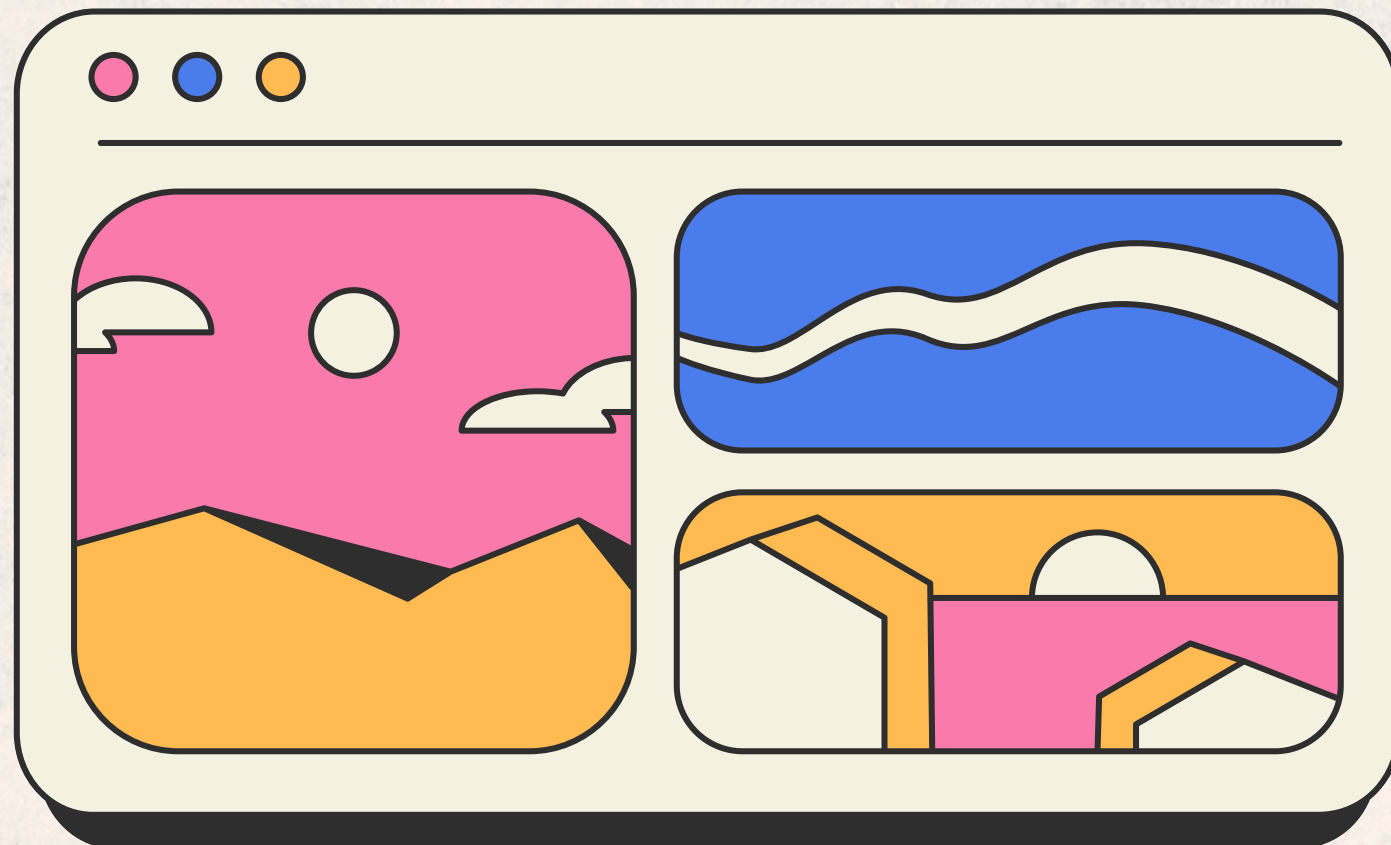
Social Media



Marketing Panel

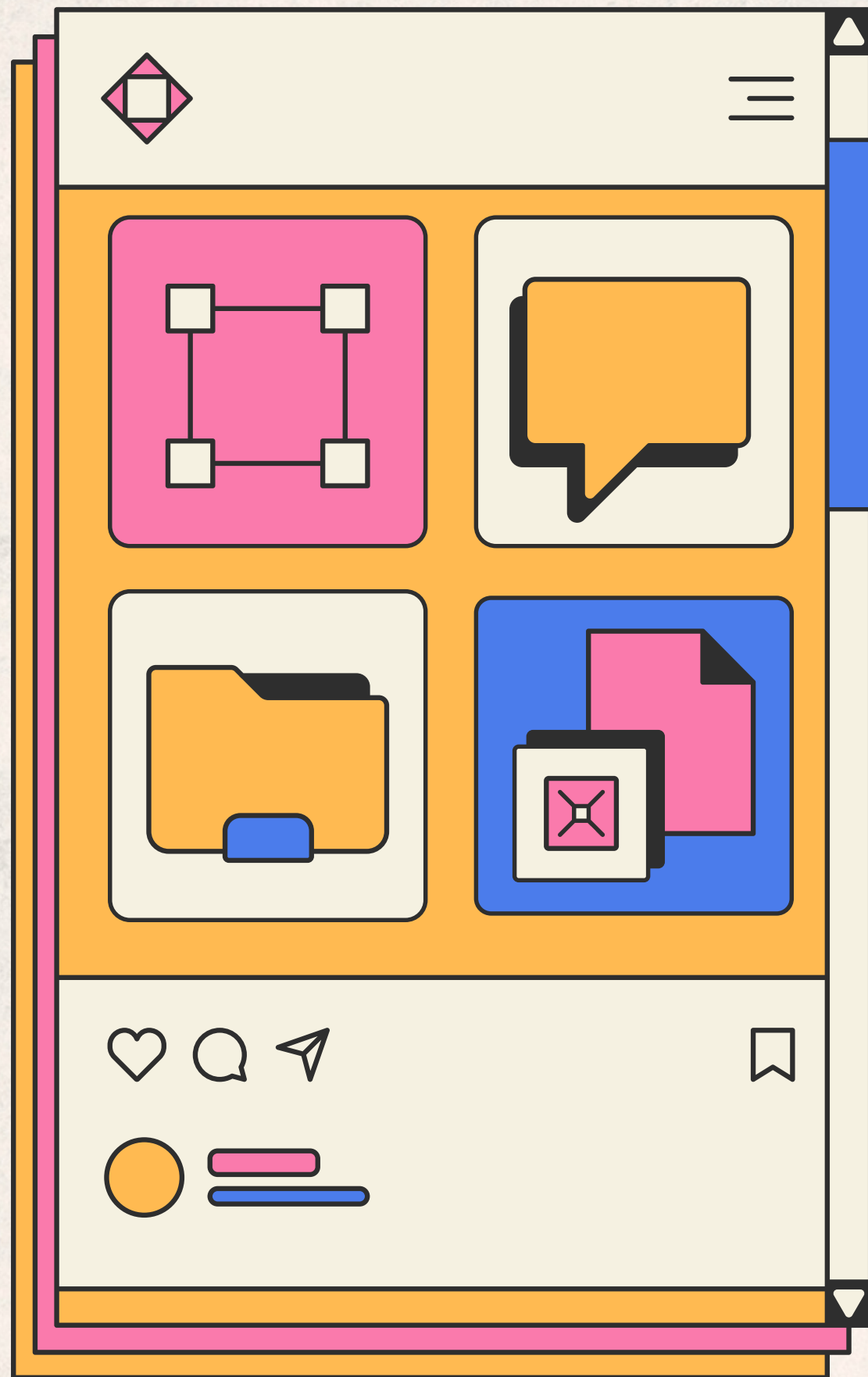


www.thedopesmm.com



Introduction

Welcome to the forefront of digital marketing innovation with our **Social Media Marketing Panel** services. In the dynamic landscape of online presence, a robust social media strategy is paramount, and our panel is designed to be your comprehensive solution. Whether you're a business looking to enhance brand visibility or an individual aiming to grow your online influence, our Social Media Marketing Panel offers a suite of tools and features tailored to meet your unique goals. Join us in navigating the exciting realm of social media, where every click, like, and share propels you towards digital success.



Understanding the Social Media Marketing Panel:

At its core, a **Social Media services Panel** is a centralized platform that provides a range of services to streamline and enhance social media activities. From managing multiple social media accounts to scheduling posts, tracking analytics, and engaging with the audience, these panels are designed to be an all-in-one solution for effective social media management.



Key Features of Social Media Marketing Panel Services:

Multi-Platform Management:

A good Social Media Marketing Panel allows users to manage accounts across various platforms seamlessly. From Facebook and Instagram to Twitter and LinkedIn, the ability to oversee all your social media activities in one place is a time-saving and efficiency-boosting feature.

Post Scheduling and Automation:

Time is of the essence in social media marketing. The ability to schedule posts in advance and automate certain tasks ensures a consistent and timely presence on your chosen platforms. This feature is especially beneficial for those looking to maintain a regular posting schedule without being tied to their devices.

Real-Time Analytics:

Data-driven decision-making is crucial for social media success. A robust Social Media Marketing Panel provides real-time analytics, offering insights into the performance of your posts, audience engagement, and overall social media effectiveness. These analytics empower users to refine their strategies based on concrete data.

Thank you!



www.thedopesmm.com

